



Better Care Fund 2023-2025

Chris Morley, Interim Locality Director – Plymouth
Gary Walbridge, Head of Adult Social Care

Better Care Fund 2023 - 25

- The Better Care Fund (BCF) is the only mandatory policy to facilitate integration between Health and Social Care, providing a framework for joint planning and commissioning. The BCF brings together ring-fenced budgets from NHS allocations, ring-fenced BCF grants from Government, the Disabled Facilities Grant, and voluntary contributions from local government budgets. The Health and Wellbeing Board has oversight of the BCF and is accountable for its delivery.
- National planning requirements for the BCF are set out within The Better Care Fund (BCF) Policy Framework and were published on 5 April 2023 by DHSC & DLUHC. The Policy Framework sets out the Government's priorities for 2023-25, including improving discharge, reducing the pressure on Urgent and Emergency Care and social care, supporting intermediate care, unpaid carers and housing adaptations.
- The vision for the BCF over 2023-25 is to support people to live healthy, independent and dignified lives, through joining up health, social care and housing services seamlessly around the person. This vision is underpinned by the two core BCF objectives:
 - Enable people to stay well, safe and independent at home for longer
 - Provide the right care in the right place at the right time

BCF Planning Requirements

The planning requirements set out within the BCF Policy Framework mandate the following:

- Submission of BCF plan documents covering 2023-25 by 28 June 2023. NHS England will assure and approve the plans, writing to areas to confirm that the NHS minimum funding can be released. Approval letters will be issued by 8 September 2023 giving formal permission to spend (NHS minimum).
- A s.75 (NHS Act 2006) agreement between each HWB Board and NHS Devon (Integrated Care Board) to be completed by 31 October 2023. This agreement cannot be finalised until the annual BCF plan has been approved by NHS England.
- In total, there are three BCF Plans submitted for Devon, one for each Health & Wellbeing Area and as per the national planning requirements each plan includes:
 - A narrative plan (headings as recommended by the planning requirements)
 - A template spreadsheet plan

Utilisation of the BCF

- BCF investments have been developed over a number of years, and in order to ensure long term sustainable service, investment has been agreed to enable recruitment to substantive posts, or as part of enhancements to contracts with care sector and VCSE.
- Investment supports the key objectives required by the national planning requirements.
- A key component of the BCF has been to support the development of and fund the Discharge to Assess pathways over several years (prior and subsequent to the national schemes as part of the Covid response). Costs associated with this remain part of the BCF plans across the ICS.
- As part of planning an evaluation of the schemes has been undertaken to consider delivery and impact.

BCF Metrics

The National Planning Requirements set out a set of key metrics shown below that form the basis of monitoring performance against the BCF plan:

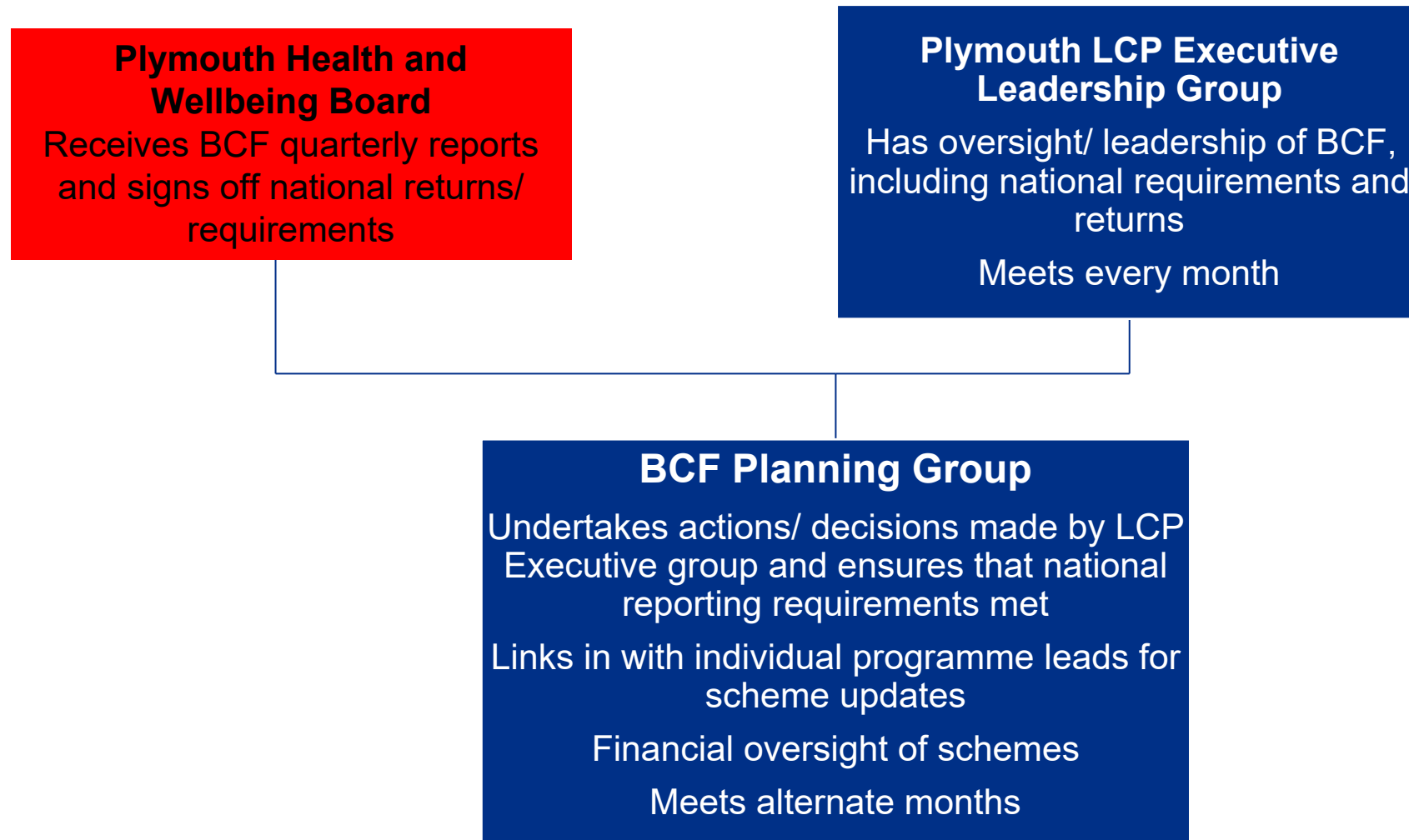
- Avoidable Admissions
- Falls
- Discharge to Usual Place of Residence
- Residential Admissions
- Reablement

We are currently reviewing our trajectories against these to ensure our plans and investments are targeting and delivering against these and will review our BCF investments in year to ensure these remain aligned

Additional Discharge Fund

- In 2023-24, the Government is providing £600 million (£300 million for ICBs, £300 million for local councils) to enable local areas to build additional adult social care (ASC) and community-based reablement capacity to reduce delayed discharges and improve outcomes for patients. For 2024-25 this fund increases to £1 billion.
- Local areas should use the discharge funding as part of BCF plans and in conjunction with wider funding to build additional social care and community-based reablement capacity, maximise the number of hospital beds freed up and deliver sustainable improvements for patients.
- The funding can be used to continue to support investments made in services from the ASC Discharge Funding in 2022-23 but should not use the new discharge funding in 2023-24 to replace existing expenditure on social care and community services.
- The Plymouth allocation of this fund for 2023-24 is £3.341m (funding is allocated across PCC £1.81m and NHS Devon Plymouth Locality £1.528m)

Plymouth BCF Governance



Plymouth BCF Plan 2023-25

Plymouth Better Care Fund 2022/23 Investments (£37.8m)

Core Mandated Services

- Community Equipment Service (£1.5m)
- Disabled Facilities Grant (£2.8m)

Support to Social Care (£6.4m – unchanged since 2018)

Hospital Discharge – focused investment supporting capacity creation, outcome-focused reablement provision, underpinned by a Home First approach promoting independence and reducing long term need

- Investment in Independence @ Home Reablement Service & Homefirst Service (Pathway 1) (£1.6m)
- Commissioning of Pathway 2 placements along with enhanced community support (full MDT input) to manage recovery and return home) (£2m)
- Delivery of a Trusted Assessor model acting as an interface between hospital system and DTA placements, supported by a bed bureau process to ensure efficient identification of placements (£69k)
- Discharge to Assess care delivery, IHDT Command Centre, and review capacity to support timely review and discharge (improved individual outcomes optimising capacity) (£13.1m)

Plymouth Better Care Fund 2022/23 Investments (£37.8m)

IHDT Command Centre, and review capacity to support timely review and discharge (improved individual outcomes optimising capacity) (£13.1m)

Admission Avoidance – short term support and interventions to prevent avoidable hospital admissions

- Commissioning of Intermediate Care Placements (within Care Home Market) to enable respite, rehabilitation and reablement along with enhanced community support (full MDT input) to manage recovery and return home (£1.8m)
- Frailty Nurses – Providing in-reach at the front door of the Derriford Hospital ED and MAU (£160k)

Care Market/Social Care - increased resilience supporting system flow

- Domiciliary Care investment through enhanced rates to support resilience (through recruitment and retention) (£2m)
- Primary Care Support to market (inc OOH) (£203k)
- Care Home Quality Support (£300k)

Other

- Carers Services – providing support and guidance, Carers Personal Budgets, preventing carer breakdown and raising the profile of carers (£2.1m)
- Health Navigators (£100k)
- Crisis Café (£50k)
- Community Crises Response (£117k)
- VCSE Investment (£180k)

Additional Discharge Funding – targeted schemes to support delivery of D&C modelling to meet discharge need (£3.3m)